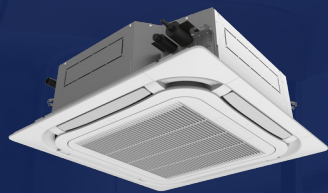




CLIMATE CONTROL WITH EFFICIENCY & AESTHETIC APPEAL



360° CASSETTE

- UP TO 24.5 SEER2 / 15.5 EER2 / 9.5 HSPF2 EFFICIENCY
- COOLING RANGE: -20°F - 122°F
- HEATING RANGE: -22°F - 86°F
- MAXIMUM LINE LENGTH: 131 FT.

MAINTAIN COMFORT WITH AN UNOBTRUSIVE, FLEXIBLE OPTION

GREE's ceiling cassette inconspicuously provides quiet performance through its innovative, 360° design. The ceiling cassette is suitable for any room and can be easily installed in a suspended ceiling with only a discreet decorative discharge grille.

- 4-Way discharge air
- Multiple fan speeds
- Swing louver control
- Automatic voltage adaption
- Internal condensate drain pump
- Sentry float switch
- Refrigerant sensor
- Anti-corrosion Fins

SYSTEM TYPE			HEAT PUMP													
Indoor Model			CAS09HP230V1R32AH			CAS12HP230V1R32AH			CAS18HP230V1R32AH			CAS24HP230V1R32AH			CAS30HP230V1R32AH	CAS36HP230V1R32AH
Outdoor Model			VIR09HP230V1R32AO	ENV09HP230V1R32AO	SAP09HP230V1R32AO	VIR12HP230V1R32AO	ENV12HP230V1R32AO	SAP12HP230V1R32AO	VIR18HP230V1R32AO	ENV18HP230V1R32AO	SAP18HP230V1R32AO	VIR24HP230V1R32AO	ENV24HP230V1R32AO	SAP24HP230V1R32AO	LIV30HP230V1R32AO	LIV36HP230V1R32AO
SYSTEM PERFORMANCE																
Cooling Capacity	Min - Max	Btu/h	2,559 - 12,624	2,559 - 12,624	2,900 - 14,300	2,300 - 16,000	2,300 - 16,000	1,980 - 15,300	5,118 - 19,790	5,118 - 19,790	4,094 - 20,470	3,100 - 29,000	3,100 - 29,000	5,000 - 31,400	4,780 - 33,440	7,850 - 37,500
	Rated Capacity @95°F	Btu/h	9,100	9,100	9,100	12,000	12,000	12,000	18,000	18,000	18,000	22,000	22,000	22,000	30,000	33,600
Heating Capacity	Min - Max	Btu/h	2,900 - 13,648	2,900 - 13,648	2,900 - 14,300	2,700 - 14,000	2,700 - 14,000	2,900 - 15,850	4,436 - 20,472	4,436 - 20,472	4,947 - 20,470	3,920 - 29,000	3,920 - 29,000	5,120 - 32,400	5,730 - 35,140	10,000 - 37,500
	Rated Capacity @47°F	Btu/h	10,500	10,500	10,500	12,000	12,000	12,000	18,000	18,000	18,000	24,000	24,000	24,000	30,000	34,000
	Rated Capacity @17°F	Btu/h	8,800	8,800	8,900	10,000	10,000	10,300	14,700	14,700	15,500	19,400	19,400	20,000	24,000	27,200
	Rated Capacity @5°F	Btu/h	7,600	7,600	8,500	10,000	10,000	10,000	12,600	12,600	13,500	16,800	16,800	17,000	21,000	23,400
SEER2			24.0	24.0	24.5	23.0	23.0	23.0	21.0	21.0	23.0	22.5	22.5	23.0	22.50	21.0
EER2			15.0	15.0	15.5	13.0	13.0	13.0	10.9	10.9	10.75	11.6	11.6	12.5	11.25	11.95
HSPF2			9.2	9.2	9.5	9.0	9.0	9.0	9.0	9.0	9.2	9.0	9.0	9.0	8.5	8.5
COP @5°F			1.94	1.94	1.84	1.90	1.90	1.90	1.80	1.80	1.80	1.80	1.80	1.80	1.80	1.90
Energy Star®			YES	YES	YES	NO	NO	NO	NO	NO	NO	NO	NO	NO	NO	NO
Energy Star® Certified with Cold Climate Designation			YES	YES	YES	NO	NO	NO	NO	NO	NO	NO	NO	NO	NO	NO
Cooling Temperature Range	°F		-20 - 122			-20 - 122			-20 - 122			-20 - 122			-4 - 122	
Heating Temperature Range	°F		-22 - 86			-22 - 86			-22 - 86			-22 - 86			-13 - 75	
Refrigerant Type			R32			R32			R32			R32			R32	
INDOOR UNIT			CAS09HP230V1R32AH			CAS12HP230V1R32AH			CAS18HP230V1R32AH			CAS24HP230V1R32AH			CAS30HP230V1R32AH	CAS36HP230V1R32AH
Air flow (Min-Max)	CFM		206 - 330			206 - 330			206 - 383			488 - 647			647 - 1000	665 - 1071
Sound Pressure Level (Min - Max)	dB(A)		27 - 40			29 - 41			28 - 44			38 - 44			38 - 51	38 - 52
Dehumidification	pt/hr		1.69			2.96			3.80			4.23			7.40	7.82
External Dimensions (L x D x H)	in		22-7/16 x 22-7/16 x 10-7/16			22-7/16 x 22-7/16 x 10-7/16			22-7/16 x 22-7/16 x 10-7/16			33-5/64 x 33-5/64 x 9-29/64			33-5/64 x 33-5/64 x 9-29/64	33-5/64 x 33-5/64 x 9-29/64
Package Dimension (L x W x H)	in		27-31/64 x 25-45/64 x 11-39/64			27-31/64 x 25-45/64 x 11-39/64			27-31/64 x 25-45/64 x 11-39/64			37-29/32 x 37-29/32 x 12-51/64			36-47/64 x 35-35/64 x 10-45/64	36-47/64 x 35-35/64 x 10-45/64
Net Weight	lbs		37.5			37.5			37.5			63.9			49.6	50.7
Gross Weight	lbs		48.5			48.5			48.5			83.8			62.8	63.9
CASSETTE GRILLE (REQUIRED)			GREETF05			GREETF05			GREETF05			GREETF06			GREETF06	
Grille Dimension (L x D x H)	in		24-13/32 x 24-13/32 x 1-7/8			24-13/32 x 24-13/32 x 1-7/8			24-13/32 x 24-13/32 x 1-7/8			37-13/32 x 37-13/32 x 2-3/64			37-13/32 x 37-13/32 x 2-3/64	
Package Dimension (L x W x H)	in		27-19/32 x 27-19/32 x 4-59/64			27-19/32 x 27-19/32 x 4-59/64			27-19/32 x 27-19/32 x 4-59/64			40-43/64 x 40-55/64 x 4-13/32			40-43/64 x 40-55/64 x 4-13/32	
Weight (Net / Gross)	lbs		6.6 / 9.9			6.6 / 9.9			6.6 / 9.9			13.23 / 20.948			13.23 / 20.948	
OUTDOOR UNIT			VIR09HP230V1R32AO	ENV09HP230V1R32AO	SAP09HP230V1R32AO	VIR12HP230V1R32AO	ENV12HP230V1R32AO	SAP12HP230V1R32AO	VIR18HP230V1R32AO	ENV18HP230V1R32AO	SAP18HP230V1R32AO	VIR24HP230V1R32AO	ENV24HP230V1R32AO	SAP24HP230V1R32AO	LIV30HP230V1R32AO	LIV36HP230V1R32AO
Sound Pressure Level	dB(A)		52	52	56	52	52	55	59	59	59	58	61	62	62	
External Dimensions (L x D x H)	in		31-37/64 x 13-25/32 x 21-27/32	31 37/64 x 13 25/32 x 21 27/32	34-3/8 x 14-51/64 x 21-27/32	31-37/64 x 13-25/32 x 21-27/32	31 37/64 x 13 25/32 x 21 27/32	34-3/8 x 14-51/64 x 21-27/32	37-23/32 x 15-53/64 x 25-63/64	37-23/32 x 15-53/64 x 25-63/64	37-23/32 x 15-53/64 x 25-63/64	37-23/32 x 15-53/64 x 25-63/64	39-3/8 x 16-13/16 x 29-3/8	39-3/8 x 16-13/16 x 29-3/8	39-3/8 x 15-13/16 x 29-3/8	
Package Dimension (L x W x H)	in		34-21/64 x 15-43/64 x 24-13/32	34 21/64 x 15 43/64 x 24 13/32	37-7/16 x 16-31/32 x 24-13/32	34-21/64 x 15-43/64 x 24-13/32	34 21/64 x 15 43/64 x 24 13/32	37-7/16 x 16-31/32 x 24-13/32	40-5/8 x 17-61/64 x 29-1/64	40-5/8 x 17-61/64 x 29-1/64	40-5/8 x 17-61/64 x 29-1/64	40-5/8 x 17-61/64 x 29-1/64	42-33/64 x 19-1/64 x 31-57/64	42-33/64 x 19-1/64 x 31-57/64	42-33/64 x 19-1/64 x 31-57/64	
Net Weight	lbs		70.6	70.6	78.3	67.3	67.3	78.3	94.8	94.8	94.8	92.6	103.6	115.8	116.8	122.4
Gross Weight	lbs		76.1	76.1	84.9	72.8	72.8	84.9	104.7	104.7	104.7	102.5	114.7	126.8	127.9	133.4
REFRIGERANT PIPING																
Refrigerant Charge - R32	oz		30	30	35.3	28.2	28.2	35.3	40.6	40.6	47.6	42.3	49.4	56.4	56.4	
Additional Charge	oz/ft		0.2	0.2	0.2	0.2	0.2	0.2	0.2	0.2	0.4	0.4	0.4	0.4		
Indoor Piping Connection (Liquid - Gas)*	in		1/4 - 3/8			1/4 - 3/8			1/4 - 1/2			1/4 - 5/8			1/4 - 5/8	
Outdoor Piping Connection (Liquid - Gas)	in		1/4 - 3/8	1/4 - 3/8	1/4 - 1/2	1/4 - 1/2	1/4 - 1/2	1/4 - 1/2	1/4 - 1/2	1/4 - 1/2	1/4 - 5/8	1/4 - 5/8	1/4 - 5/8	1/4 - 5/8	1/4 - 5/8	
Pre-Charge Length	ft		25			25			25			25			25	
Pipe Length (Min - Max)	ft		10 - 66	10 - 66	10 - 131	10 - 66	10 - 66	10 - 131	10 - 66	10 - 66	10 - 131	10 - 131	10 - 131	10 - 131	10 - 131	
Max. Pipe Elevation	ft		40	40	82	40	40	82	40	40	82	82	82	82	82	
ELECTRICAL																
Power Supply			208-230V / 1Ph / 60Hz (Powered by the Outdoor Unit)			208-230V / 1Ph / 60Hz (Powered by the Outdoor Unit)			208-230V / 1Ph / 60Hz (Powered by the Outdoor Unit)			208-230V / 1Ph / 60Hz (Powered by the Outdoor Unit)			208-230V / 1Ph / 60Hz (Powered by the Outdoor Unit)	
Voltage Range (Min - Max)	VAC		187 - 253			187 - 253			187 - 253			187 - 253			187 - 253	
Rated Current - Cooling	A		5.8	5.8	7.5	7.0	7.0	5.95	11.5	11.5	12.5	13.5	13.5	13.5	18	20
Rated Current - Heating	A		6.1	6.1	8.6	7.49	7.49	8.52	11.5	11.5	16	16	16	20.5	19.7	20
MOCP	A		15	15	15	15	15	15	20	20	25	30	30	30	30	35
MCA	A		10	10	11	10	10	11	16	16	23	22	22	25.5	27	24
Main Power Wire Size	AWG		Per Local Code			Per Local Code			Per Local Code			Per Local Code			Per Local Code	
Interconnecting Wire Size	AWG		14 / 4			14 / 4			14 / 4			14 / 4			14 / 4	
LIMITED WARRANTY			5 Years Parts, 7 Years Compressor - Residential & Commercial						5 Years Parts, 7 Years Compressor - Residential & Commercial							

* Refrigerant piping must be sized by the indoor unit connections. If the outdoor unit connection is a different size from the indoor unit connection, a flare adapter must be purchased separately and installed on the outdoor unit.



Air comfort for all

GREECOMFORT.COM

PTAC DIRECT SALES, INC.
185 S. KIMBALL AVE., SUITE 130
SOUTHLAKE, TX 76092
877.454.7822
www.PTACdirect.com