



PTAC Direct Sales, Inc.
185 S. Kimball Ave., Suite 130
Southlake, TX 76092
877.454.7822 (T)
877.647.6408 (F)





www.PTACdirect.com



SUBMITTAL DATA

ENV18HP230V1R32AH / ENV18HP230V1R32AO
 18000 BTU/H Wall Mounted Heat Pump System

Job Name	Location	Date
Purchaser	Engineer	
Submitted to	For	
Unit Designation	Schedule No.	

			
YBE1FBF	ENV18HP230V1R32AH	ENV18HP230V1R32AO	XE71 (Optional)

GENERAL FEATURES

- AHRI Certificate: [214777850](https://www.ahri.org/certificates/214777850)
- High Efficiency DC Inverter Technology
- Compact and Quiet Design
- Auto-Clean Function on Indoor Unit
- Swing Louver Control
- Self-diagnosis
- New R32 Refrigerant
- Wi-Fi Included (Factory Installed)
- Wireless Remote with LCD Display
- Wired Controller Options
- Low Ambient Cooling down to -20°F (Range -20°F to 122°F)
- Low Ambient Heating down to -22°F (Range -22°F to 86°F)
- Coil (Indoor and Outdoor) Copper Tube / Aluminum Fin
- Blue Colored Fin - 500 Hrs Salt Spray Tested
- Fresh Air Kit - TL204000100 is offered as an accessory, needs to be ordered separately.

SPECIFICATIONS, FEATURES & FUNCTION SUMMARY

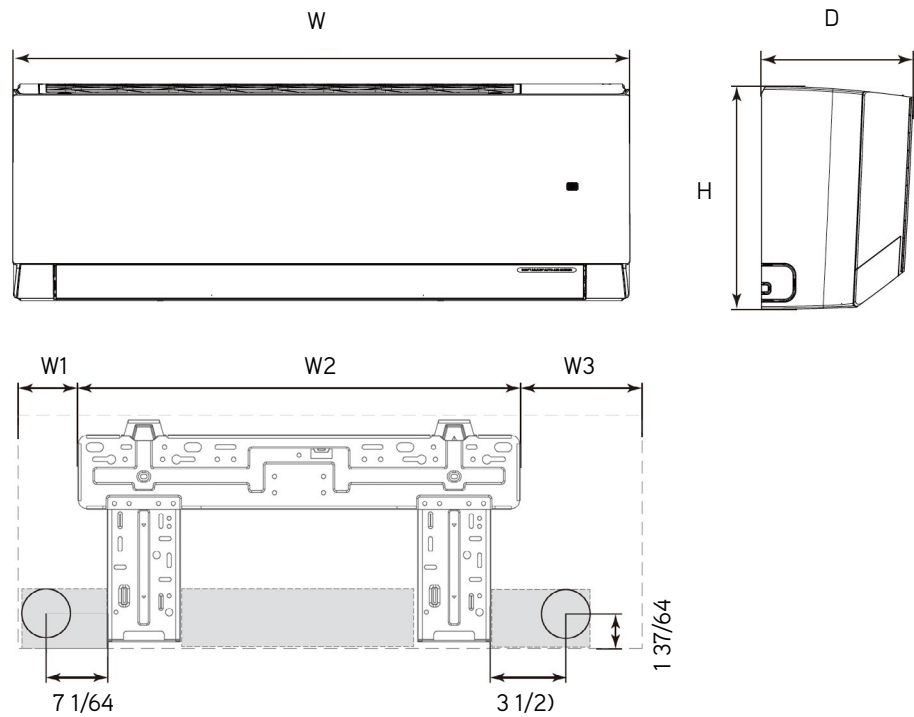
SYSTEM TYPE			HEAT PUMP		FEATURES & FUNCTIONS SUMMARY	
Outdoor Model			ENV18HP230V1R32AO		Inverter Type	
Indoor Model			ENV18HP230V1R32AH		G20	
SYSTEM PERFORMANCE						
Cooling Capacity	Min - Max	Btu/h	5,118 - 22,178			
	Rated Capacity @95°F	Btu/h	18,000			
Heating Capacity	Min - Max	Btu/h	4,436 - 22,178			
	Rated Capacity @47°F	Btu/h	18,000			
	Rated Capacity @17°F	Btu/h	14,700			
	Rated Capacity @5°F	Btu/h	14,600			
SEER2			24.5			
EER2			13.65			
HSPF2			9.0			
COP @5°F			1.9			
Cooling Temperature Range		°F	-20 - 122			
Heating Temperature Range		°F	-22 - 86			
Refrigerant Type			R32			
INDOOR UNIT			ENV18HP230V1R32AH			
Air flow (Min - Max)		CFM	324 - 589			
Sound Pressure Level (Min - Max)		dB(A)	29 - 48			
Dehumidification		pt/hr	3.80			
External Dimensions (W x H x D)		in	39 3/32 x 12 1/4 x 8 47/64			
Package Dimension (W x H x D)		in	41 17/32 x 15 5/32 x 11 47/64			
Net Weight		lbs	29.8			
Gross Weight		lbs	35.3			
OUTDOOR UNIT			ENV18HP230V1R32AO			
Compressor Type		GREE G20 / SINGLE CYLINDER / 1 - STAGE INVERTER				
Sound Pressure Level		dB(A)	59			
External Dimensions (W x H x D)		in	37 23/32 x 25 63/64 x 15 53/64			
Package Dimension (W x H x D)		in	40 5/8 x 29 1/64 x 17 61/64			
Net Weight		lbs	94.8			
Gross Weight		lbs	104.7			
REFRIGERANT PIPING						
Refrigerant Charge - R32		oz	40.6			
Additional Charge		oz/ft	0.2			
Line Set Size (Liquid - Gas) - Flared Connections		in	1/4 - 1/2			
Pre-Charge Length		ft	25			
Pipe Length (Min - Max)		ft	10 - 131			
Max. Pipe Elevation		ft	82			
ELECTRICAL						
Power Supply		208-230V / 1Ph / 60Hz (Powered by the Outdoor Unit)				
Voltage Range (Min - Max)		VAC	187 - 253			
Rated Current - Cooling		A	11.5			
Rated Current - Heating		A	11.5			
MOCP		A	20			
MCA		A	16			
Main Power Wire Size		AWG	Per Local Code			
Interconnecting Wire Size		AWG	14 / 4			
REMOTE CONTROLLER FUNCTIONS						
Humidity Control		Yes				
Two-way Ventilation		Yes				
Auto Clean		Yes				
Auto Mode		Yes				
Auto Fan		Yes				
Auto Swing (Horizontal Auto Swing)		Yes				
Auto Swing - 180° (Vertical Auto Swing)		Yes				
Clock		Yes				
Dry Mode		Yes				
Dry Anti-Mildew (X-Fan) Mode		Yes				
Energy Saving Mode		Yes				
Dirty Filter Alert		Yes				
Fan Speed Control (7 Speeds)		Yes				
I Feel Function		Yes				
Child Lock		Yes				
Quiet Mode		Yes				
Room Temperature Display		Yes				
Sleep Mode		Yes				
Turbo Mode		Yes				
3 Sleep Mode Options		Yes				
Timer Mode		Yes				
Turbo Mode		Yes				
Display On/Off Control		Yes				
Freeze Guard Mode		Yes				
Power Failure Mode		Yes				

DIMENSIONS

INDOOR UNIT

Unit: inch

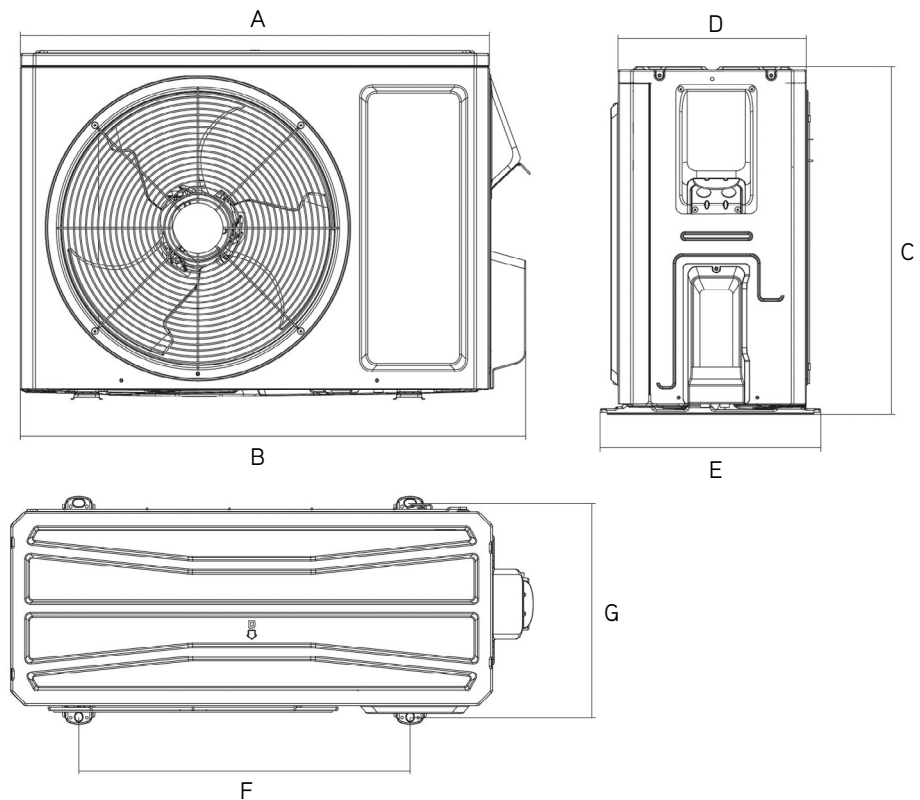
ENV18HP230V1R32AH	
DIMENSIONS	
W	39 3/32
H	12 1/4
D	8 47/64
W1	5 3/64
W2	27 55/64
W3	6 13/64



OUTDOOR UNIT

Unit: inch

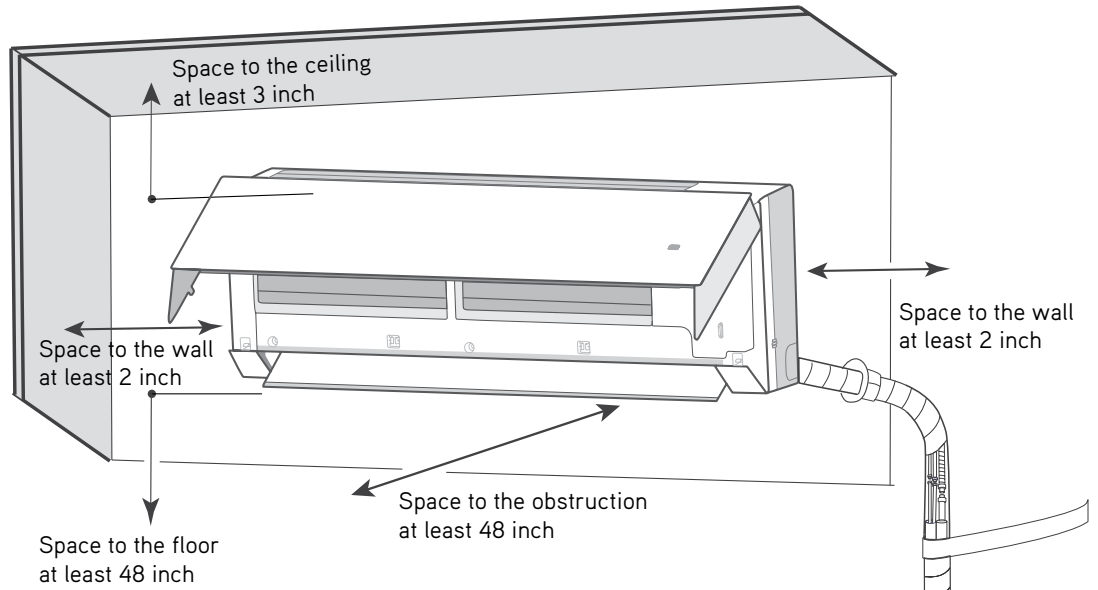
ENV18HP230V1R32AO	
DIMENSIONS	
A	35
B	37 23/32
C	25 63/64
D	13 25/64
E	15 53/64
F	22 7/16
G	14 39/64



CLEARANCES

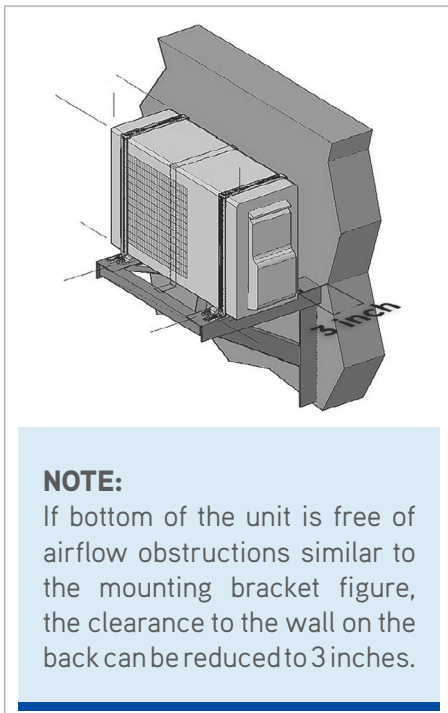
INDOOR UNIT

Minimum clearance



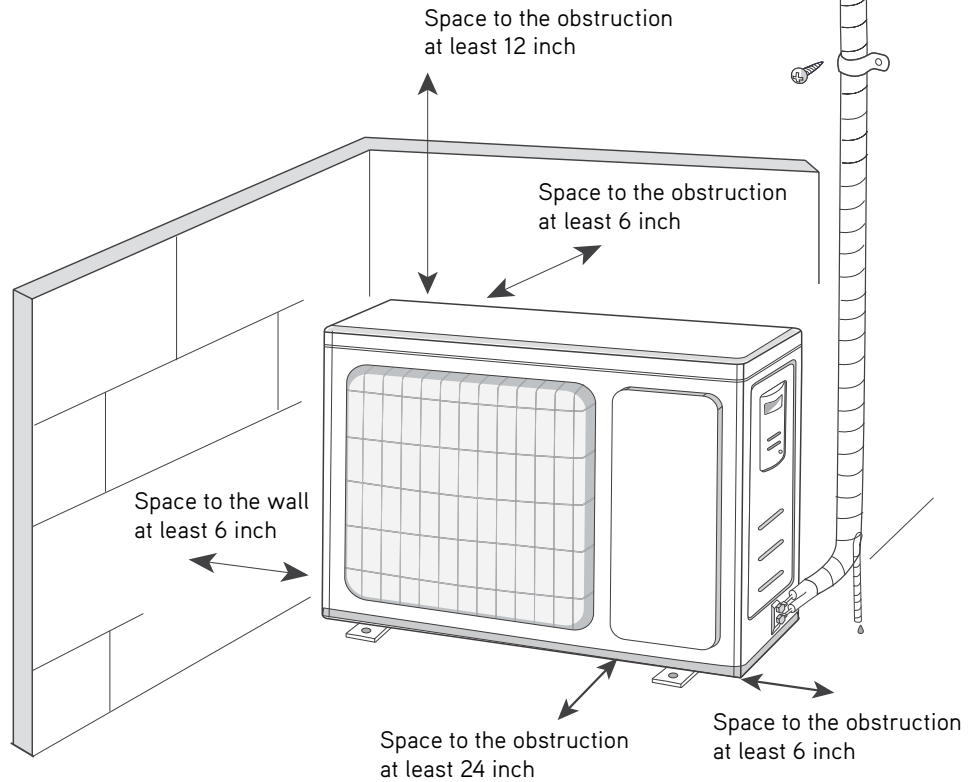
OUTDOOR UNIT

Minimum clearance



NOTE:

If bottom of the unit is free of airflow obstructions similar to the mounting bracket figure, the clearance to the wall on the back can be reduced to 3 inches.



Specifications are subject to change without notice. Manufacturer reserves the right to discontinue or modify specifications or designs without notice or without incurring obligations. All Rights reserved.